

WHO we are and WHAT we do...

**'Every Second of Every Minute of Every Working Hour
we get ANOTHER child ACTIVE'**

Provided
3,341
activity days in
School Holidays

12% primary schools
in UK have
regular Premier
Sport provision

10061 Quality
Assurance
Assessments
completed on our
staff by 90 moderators

1/2 million Over
children attended LUNCH TIME activities

Over **1 million** children attended
AFTER SCHOOL
programmes

Over
6 million
visits on CURRICULAR provision

Over **100**
new Apprenticeships created

And
262
new jobs

Over
900 Activity Professionals
working in schools DAILY

98% of schools
believe we 'contribute towards the
increased levels of participation'

- On target for **over 9 million visits** this academic year
- Data rich / **including PE attainment levels** of Primary School Children
- Supporting **and outperforming** on some NGB's participation figures

99% of Head
Teachers
believe we contribute
to improving the
quality and breadth of
PE & Sport provision



Golden Mile Activity Scheme

Golden Mile since September '15...



280,000
active children



516,000
miles recorded

miles
341,836
recorded since Easter '16

The technology records and makes possible;

- Individual Achievement
- Class Achievement
- School Achievement
- Virtual Inter & Intra Competition
- Downloadable reward certificates
- Pupil Leadership programme



Surrey 'Road to
Rio' Update

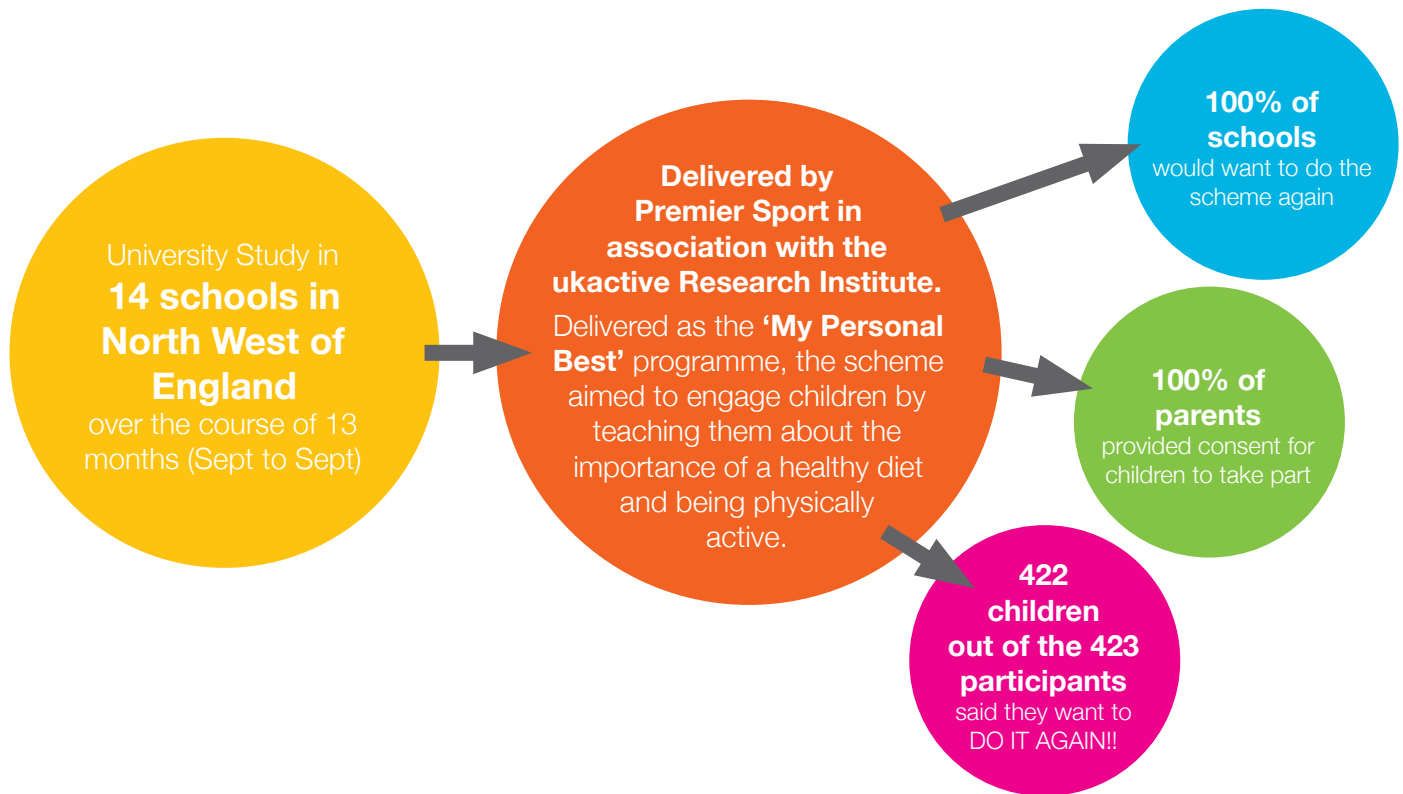
145
schools
registered

25,000 children
registered
with more schools yet to upload data,
35,000 predicted

miles
265,000
within 7 weeks

The really **interesting** bit...

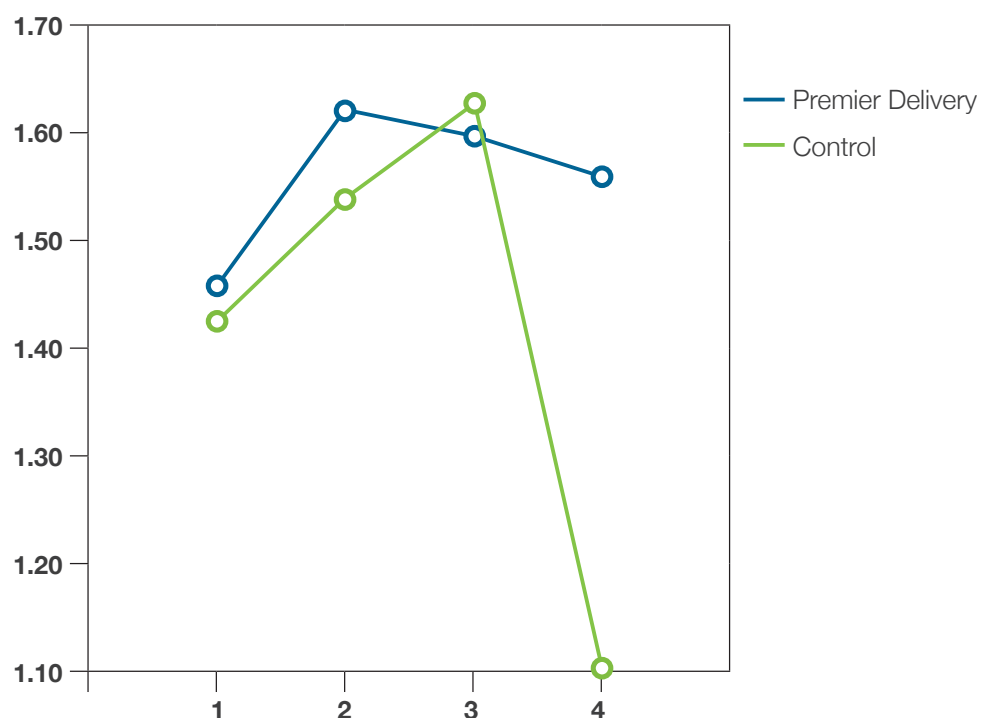
Scalable Fitness Measurement for Schools



This chart represents children's fitness levels over a full calendar year.

During the Summer break fitness declined rapidly and extensively.

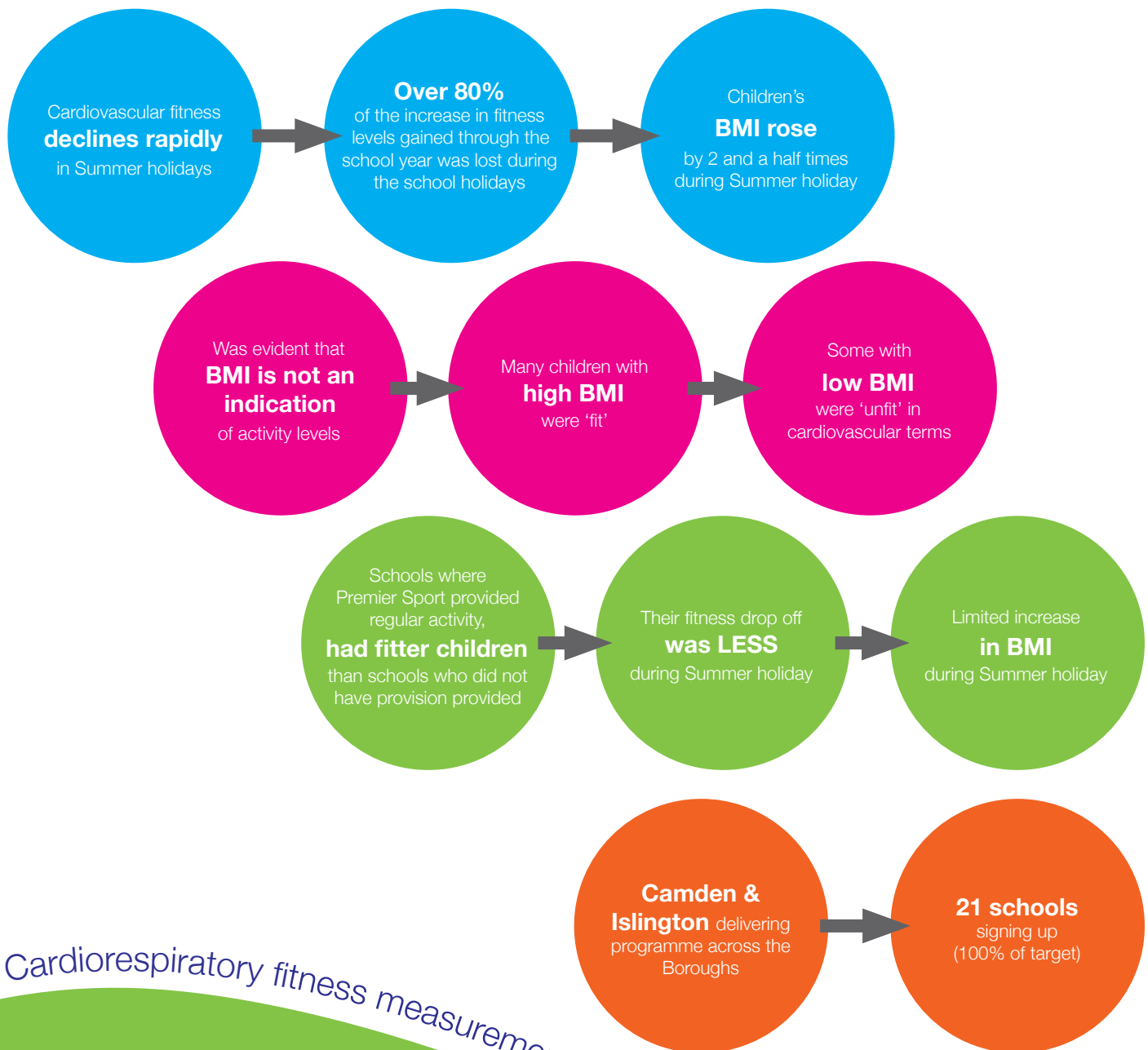
Premier Sport provision protected against this effect.



The really **interesting** bit...

Data presented at the American College of Sports Medicine Annual Meeting

Report and findings UK Launch 4th July



Cardiorespiratory fitness measurement **is scalable** in schools

Next Steps;

How can this information be used to **have greater impact?**