

Annual Quality and Impact Review of School Provision 2016



97% of schools

said that the PEG programme contributes to **improving the quality and breadth of PE** and sport provision.

94% of schools

said **'Good or Excellent'** when asked them to rate if our PEG sessions and activities delivered **meets the needs** of the range of pupils they work with.



92% of schools

said that the Physical Activity Professional(s) **has high expectations of all pupils they work with** and a secure understanding of the age range and subject knowledge.



93% of schools

said that Premier Sport **contributes to increasing levels of participation** in PE and Sport

92% of schools

rated **'Good or Excellent'** when asked them to rate the extent to which **pupils can articulate their knowledge** and understanding clearly in an age appropriate way.

90% of schools

said that Premier Sport contributes to **pupils developing a healthy lifestyle**.

93% of schools

rated good or outstanding the extent to which the children **make sustained progress**, developing excellent knowledge, understanding and skills from different starting points

94% of schools

rated **'Good or Excellent'** when asked them to rate the extent to which the PEG leadership and management team are able to articulate **what they can contribute to the school's children, staff, culture and curriculum** – creating best-fit models of relevant programme provision that raise standards.

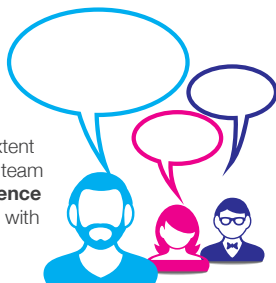


90% of schools

rated **'Good or Excellent'** the extent to which attainment of most groups with PEG staff is **broadly in line with national standards** or, if lower, is improving.

87% of schools

rated **'Good or Excellent'** when asked the extent to which the PEG leadership and management team and Physical Activity Professional **have a presence in the school and communicate effectively** with staff and the leadership team.



85% of schools

rated **'Good or Excellent'** when asked them to rate the extent to which the **design, delivery, evaluation and tracking of the curriculum programme** ensures impact on pupil outcomes and behaviours.



75% of schools

rated **'Good or Excellent'** when asked them to rate the extent to which **specific pupil outcomes are identified** and agreed as outcomes for the delivery of the programme.

97% of schools

rated **'Good or Excellent'** the extent to which **pupils enjoy and participates, responding positively** to PEG sessions and activities.

83% of schools

responded that the assessment information is used to plan **appropriate T & L strategies** and used to inform intervention and challenge pupils with differing needs and abilities.



96% of schools

would **recommend Premier Sport** to another school.